

DVSINFO



**WanSpy 1.6
Installation Notes**

Table of Contents

Table of Contents	4
Installation and Configuration	5
<i>Installing WanSpy in Win9x/NT/2000</i>	5
<i>Licensing</i>	8
<i>Registering</i>	8
<i>Configuration of Ciscoâ Router</i>	9
Configuring SNMP.....	9
Configuring IP Accounting	11

Installation and Configuration

WanSpy can install from either WanSpy CD or from Internet.

If you are installing WanSpy from CD, insert WanSpy CD into CD drive and run WanSpy1.5.exe from D:\install\setup.exe (assuming CD drive is D: on your system).

Another way is to download Latest Version of WanSpy from www.dvsinfo.com, and run setup program.

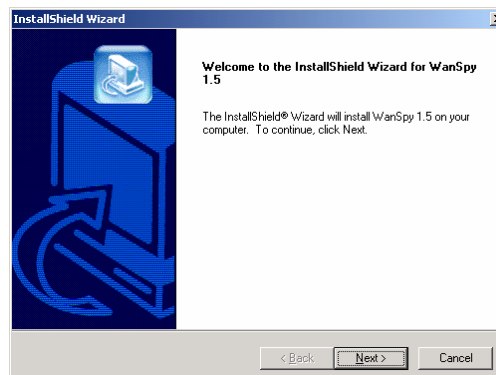
WanSpy always install as Evaluation Version, **Licensing** Section contains instruction to bring WanSpy into Registered Version.

Installation of current version of WanSpy doesn't require uninstalling previous version of WanSpy.

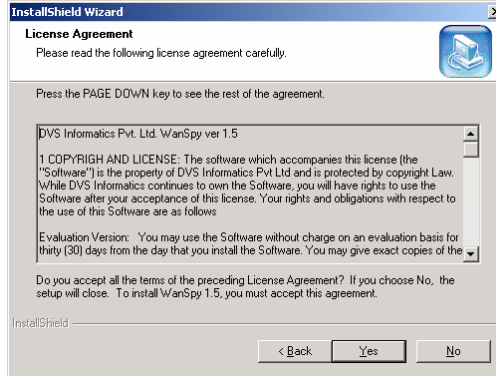
Installing WanSpy in Win9x/NT/2000

*If you are installing WanSpy in WinNT/2000, make sure you have log on with **Administrator** User Account.*

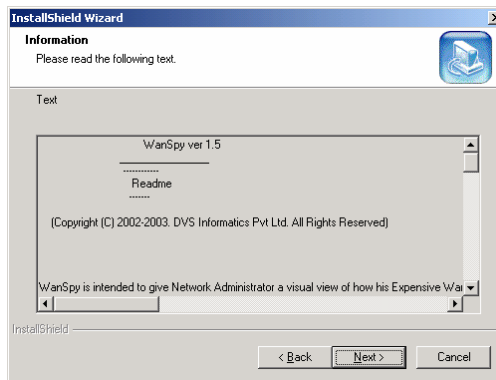
Installation of WanSpy is straightforward. Start installation by double click setup.exe. Setup will display Welcome screen. Click **Next**



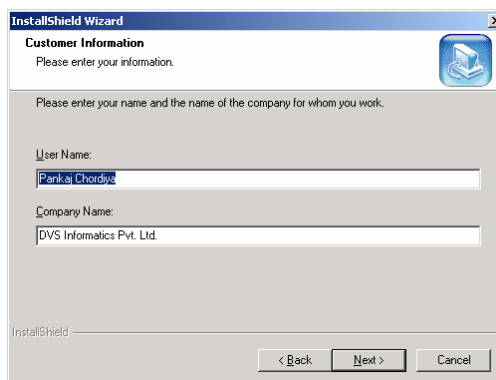
Setup will Display Software License Agreement, Click Yes to Continue.



Setup will display Readme file of WanSpy 1.6 . Click **Next** after reading it completely.

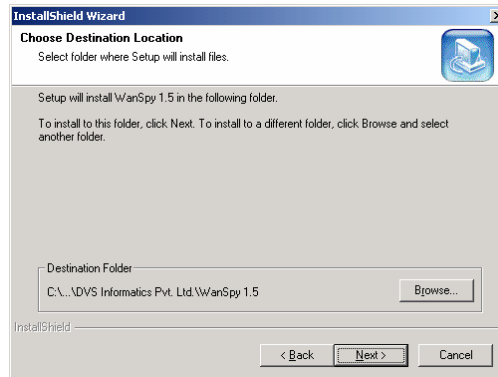


Setup will ask for user information. Enter your and your Company Name and click **Next**.

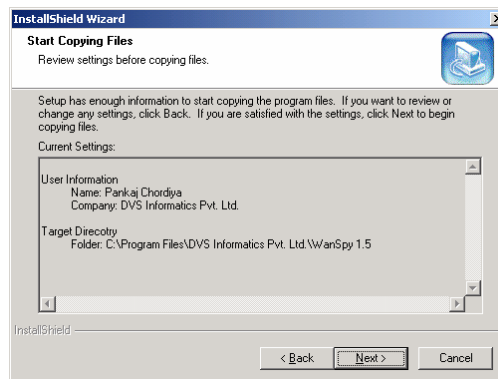


Setup will ask to choose folder, where WanSpy will install. Click **Next** after selecting destination folder.

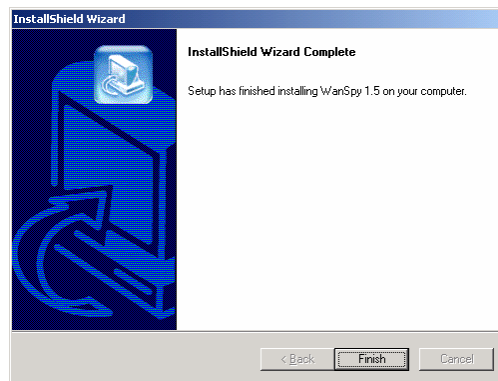
If you choose default option, setup will install WanSpy in **program files** folder of your windows system.



Setup will display information you have entered. Click **Next** if you are confirmed that information you entered are right otherwise click **Back** and change it.



Setup will now copy WanSpy files into appropriate folder.



Click **Finish**, and that's it.

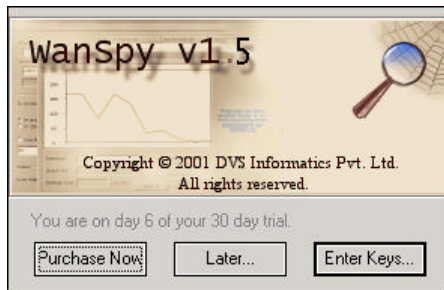
After successful installation you can run WanSpy by double clicking WanSpy 1.6 icon in WanSpy 1.6 Program Group.

Licensing

When WanSpy installed first time on system, it will work for 30 days of evaluation period with full functionality. After that you need to purchase License and Register WanSpy.

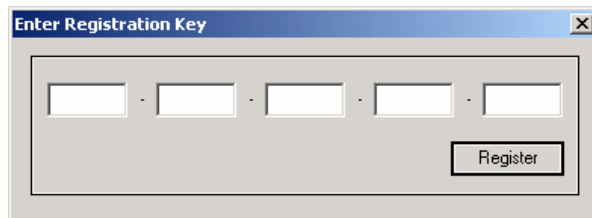
You can Register WanSpy at any time during evaluation period or after expiration of WanSpy Evaluation version.

Launch WanSpy Application



Click **Purchase Now**, you will automatically go to our Web site from where you can purchase WanSpy online.

After getting order confirmation, WanSpy License Key will be E-mailed to you. To continue registration process Click **Enter Keys**



Enter License Key that you have got by Email and press **Register**.

Please keep this License Key in safe and secure place.

After key validation Evaluation Version will convert to licensed version

Registering

If you have licensed WanSpy, please register your information into our database. It will help us to keep you update for new releases and other important news releases.

Click on **Help->Register** menu.

It will launce your default browser and open registration form from our website. Fill your information and click on **Submit**.

You will be our register user now.

Configuration of Cisco® Router

WanSpy doesn't require any global configuration, it require few configuration parameters while adding router. (See Chapter **Working with WanSpy** for instruction on Adding Router). But you need to configure your Cisco® Router little bit according to WanSpy's requirements.

*In subsequent sections all commands and keyword that need to enter as it is, are in **bold face**. Italic indicates argument for that command.*

All command arguments given in following sections are for example purposes only. You can enter your own command arguments.

Configuring SNMP

Enable SNMP

- Connect and bring up configuration terminal of Cisco® router.
- Enter into the EXEC/enable mode by giving enable mode password.

```
Router>enabl e
Password:
Router#
```

- Display running configuration and look for the SNMP configuration

```
Router#show runni ng- confi g
...
...
snmp- server communi ty publi c R0
snmp- server communi ty private RW
....
....
```

If no SNMP configuration is present, continue further with following steps. Otherwise you can keep current configuration. Or delete or modify current configuration as in subsequent section.

- Enter into global/terminal configuration mode.

```
Router#confi gure termi nal
Router(confi g) #
```

- Enable Read-only(RO) community string.

```
Router(confi g) #snmp- server communi ty publi c R0
```

- Enable Read-write(RW) community string.

```
Router(confi g) #snmp- server communi ty private RW
```

Verify Configuration

- Come out at EXEC/enable mode by pressing ctrl-z keys.

```
Router#
```

- Display running configuration and look for SNMP configuration.

```
Router#show runni ng- confi g
```

If you do not see any “snmp-server” statement, SNMP has not been enabled on router.

- Run following command to verify further.

```
Router#show snmp
```

%SNMP agent not enabled message also indicate SNMP has not been enabled on Router.

If SNMP agent in Router have been configured successfully and enabled, output of this command will be in following manner.

```
0 SNMP packets input
  0 Bad SNMP version errors
  0 Unknown community name
  0 Illegal operation for community name supplied
  0 Encoding errors
  0 Number of requested variables
  0 Number of altered variables
  0 Get-request PDUs
  0 Get-next PDUs
  0 Set-request PDUs
0 SNMP packets output
  0 Too big errors (Maximum packet size 1500)
  0 No such name errors
  0 Bad values errors
  0 General errors
  0 Response PDUs
  0 Trap PDUs
```

“show snmp” command may be useful for troubleshooting purpose. Please attaché output of this command while reporting problem at DVSINFO’s support.

Modify or Remove SNMP Configuration

- Go to global/terminal Configure mode.

```
Router#configure terminal
Router(config)#
```

- Remove current SNMP Read-only(RO) community string .

```
Router(config)#no snmp-server community public R0
```

- Enter new SNMP Read-only(RO) community string.

```
Router(config)#snmp-server community new-string R0
```

Same procedure can be follow for modifying or removing Read-write(RW) community string.

These much SNMP configuration is mandatory and enough for working with WanSpy. If you want to go for further optional Advance configuration, please refer Cisco’s Manuals or Online documents.

Configuring IP Accounting

IP accounting can be enabled on any number of interfaces. It is required to enable IP accounting on at least one of Router's Interface for working with WanSpy.

Cisco® Router measures only transit IP traffic and only on outbound basis, traffic generated by Router or Terminating on Router are not included in IP accounting statistics. So it is recommended you should enable IP accounting on Interfaces on which IP traffic is entered and from which going out.

For example if you want to see statistics of IP traffic between your Local Network and Internet, enable IP accounting on Ethernet Interface and on WAN Interface which is connected to your ISP.

Enable IP accounting

- Connect and bring up configuration terminal of Cisco® Router.
- Enter the EXEC/enable mode by giving enable mode password.

```
Router>enable
Password:
Router#
```

- Enter into global/terminal configuration mode.

```
Router#configure terminal
Router(config)#
```

- Specify Interface and enter Interface configuration mode.

```
Router(config)#interface Ethernet0/0
Router(config-if)#
```

- Enable IP Accounting on this interface

```
Router(config-if)#ip accounting
```

Same procedure can be followed to enable IP accounting on other interface if require.

Verify IP accounting Configuration

- Come out to EXEC mode pressing *ctrl-z* keys.

```
Router#
```

- Display running configuration, and see for IP accounting statement.

```
Router#show running-config
...
...
interface Ethernet0/0
ip accounting
....
....
interface Serial1/0:15
ip accounting
....
....
```

- To verify further run following command.

```
Router#show ip accounting
```

If you get IP accounting statistics in following manner, IP accounting has been enabled.

```
Source      Destination Packets      Bytes
202. 54. 6. 9 202. 55. 6. 3 438        55156
202. 55. 6. 3 202. 54. 6. 9 433        27852
202. 54. 6. 25 202. 55. 6. 2 101634     61927327
202. 55. 6. 2 202. 54. 6. 25 88372     3605941
```

```
Accounting data age is 2d15h
```

If you get display in following manner, make sure you have enabled IP accounting on interfaces through which outbound traffic transit.

```
Source      Destination      Packets      Bytes
```

```
Accounting data age is 0
```

Disable IP accounting

- Enter into global/terminal configuration mode and then Interface configuration mode

```
Router#configure terminal
Router(config)#interface Ethnernet0/0
Router(config-if)#
```

- Disable IP accounting on this interface

```
Router(config-if)#no ip accounting
```

Same procedure can be followed for other interfaces if required.

Advance IP accounting Configuration

IP accounting configuration shown in previous sections is mandatory to working with WanSpy. You can go further for optional advance IP accounting configuration.

By default Cisco® Router creates at most 512 accounting entries. This default figure can be changed as

- Enter into global/terminal configuration mode.

```
Router#configure terminal
Router(config)#
```

- Enter IP accounting threshold value.

```
Router(config)#ip accounting-threshold 1024
```

As number of accounting entries increases, Router's CPU usage increases proportionally when WanSpy retrieve IP accounting table from router.

Configure filter for IP accounting information.

- Enter into global/terminal configuration mode.

```
Router#configure terminal  
Router(config)#
```

- Enter IP address that you do not want in IP accounting statistics.

```
Router(config)#ip accounting-list 192.168.1.1 255.255.255.255
```

Control number of transit record that will be stored in IP accounting database.

- Enter into global/terminal configuration mode.

```
Router#configure terminal  
Router(config)#
```

- Enter accounting-transit count.

```
Router(config)#ip accounting-transit 1024
```

Clearing IP accounting table - This command may be useful if want to remove old accounting entries and need to take into account fresh IP accounting entries.

- Enter into EXEC/Enable configuration mode.

```
Router#
```

- Run command clear ip accounting

```
Router#clear ip accounting
```

IP accounting table can be clear from WanSpy too. This facilitates you to clear IP accounting anytime while working with WanSpy without going to Cisco®'s configuration terminal.